

# Scenic / Estates Fire Shed



This fire shed consists of many mature Oak trees, coyote brush and poison oak.

Over the past 3-5 years other fire prevention projects in this area have reduced the fuel loading making this fire shed in need of “less” work.

Given the limited equipment access in this polygon, most of the work will need to be performed with hand crews cutting vegetation and creating burn piles. Burn piles to be burned and managed by MOFD.

Non-native trees and vegetation will be removed, oaks and other remaining trees with trunk diameters roughly 6” or less will be removed. Coyote brush, poison oak and other brush will be removed leaving the mature healthy trees to create a shaded fuel break across the polygon.

Following initial treatment hand crews will maintain the work with annual weed whacking and lifting of tree canopies. Vegetation from maintenance operations will be piled and burned by MOFD.

**Estimated Cost of Initial Treatment: \$71,000.00**

**Estimated Cost of Maintenance One Year After Initial Treatment: \$15,000.00**

Fire Risk Model (spring 2022)

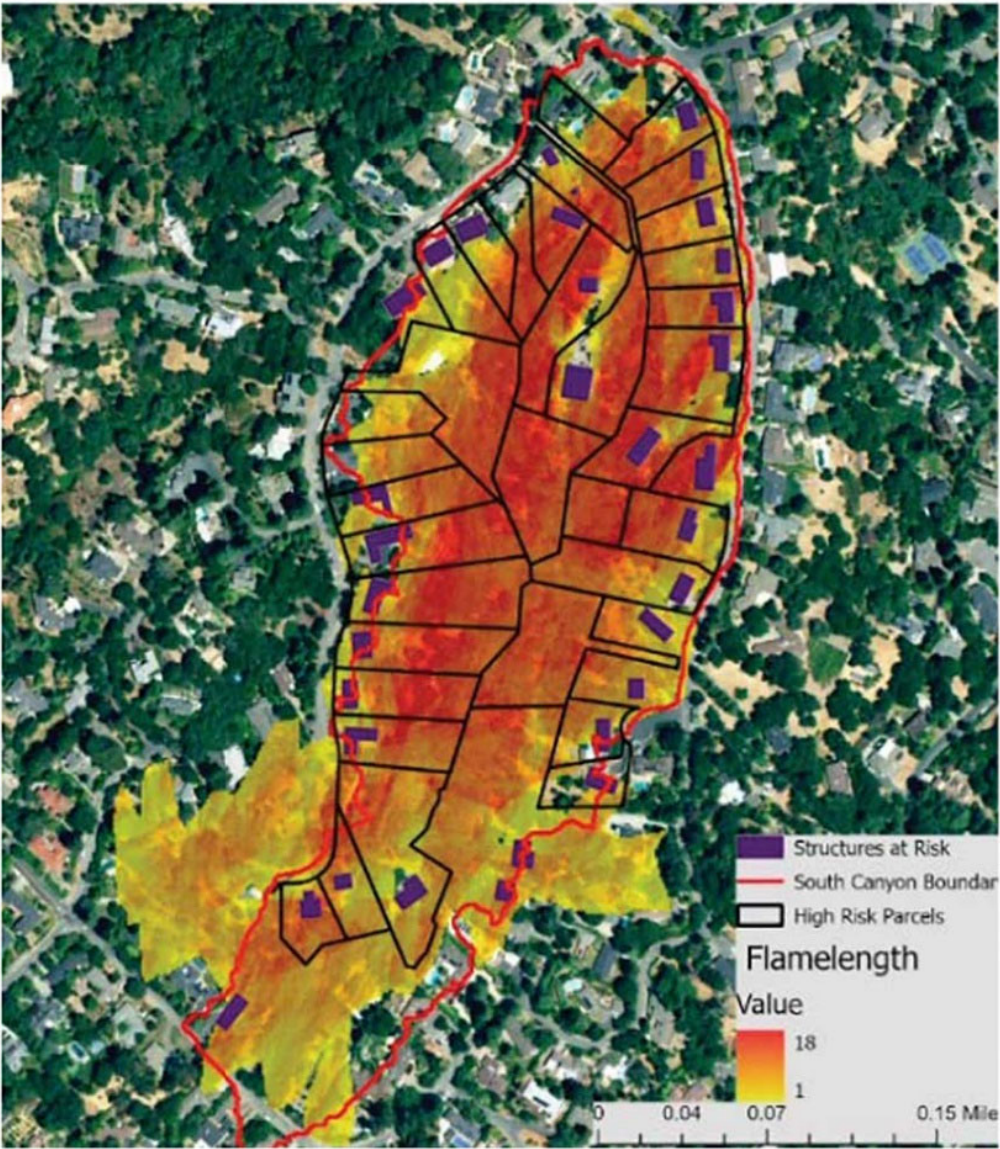


Figure 10: Prototype *fired* neighborhood simulated Flame Length (Raine, 2022)